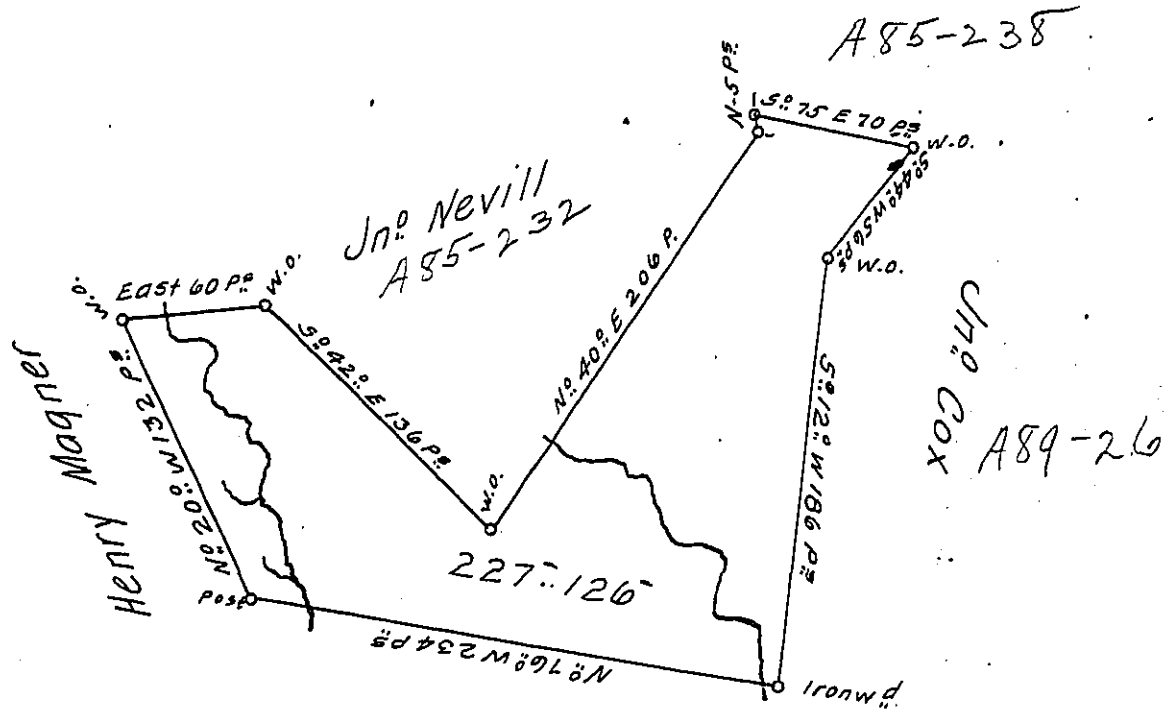


Sur y-257

232
Not patd.
3-92

Note. this Survey was returned to ye Office some time ago. but is since altered to accommodate a dispute with Jn^o Wallace - which is now settled.



Jn^o Wall
y-256

A Draught of a Survey called — situate on the Waters of Peters
Ck in Washington County containg 227 Ac^s 126 P^s strict Measure
executed Feb^y 2^d 1786 in Consequence of a Certif^r for 400 Ac^s
granted Jn^o Wall by the Commiss^{rs} appointed by Virg^a to adjust
the Claims to unpatented Lands in ye Counties Monong^a Yohg^a &
Ohio and duly entered with ye County Surv^r &c.

Jn^o Lukens Esq^r S. Gen^l

Presley Nevill } D.S.
Matt^w Ritchie }

IN TESTIMONY that the above is a copy of the original remaining on file in
the Department of Internal Affairs of Pennsylvania, made
conformably to an Act of Assembly approved the 16th day of
February, 1833, I have hereunto set my Hand and caused
the Seal of said Department to be affixed at Harrisburg,
this twenty third day of April 1908

Henry Howard
Secretary of Internal Affairs.